

# Workable leaf springs

for Land Rover LWB series

VMD24002

1/35 scale photoetched detail set

for Italeri kits

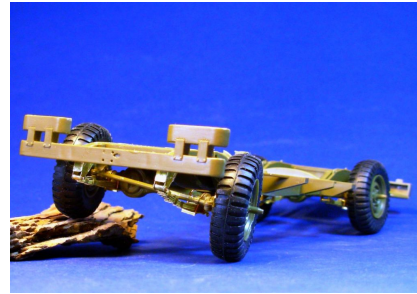
ed2

minor 

Made in Europe 2017


[www.minor-web.com](http://www.minor-web.com)

**CAUTION** This product contain small pieces,  
not suitable for childrens under 10 years



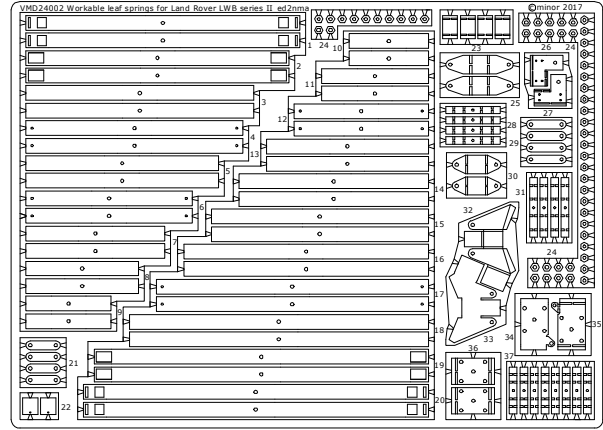
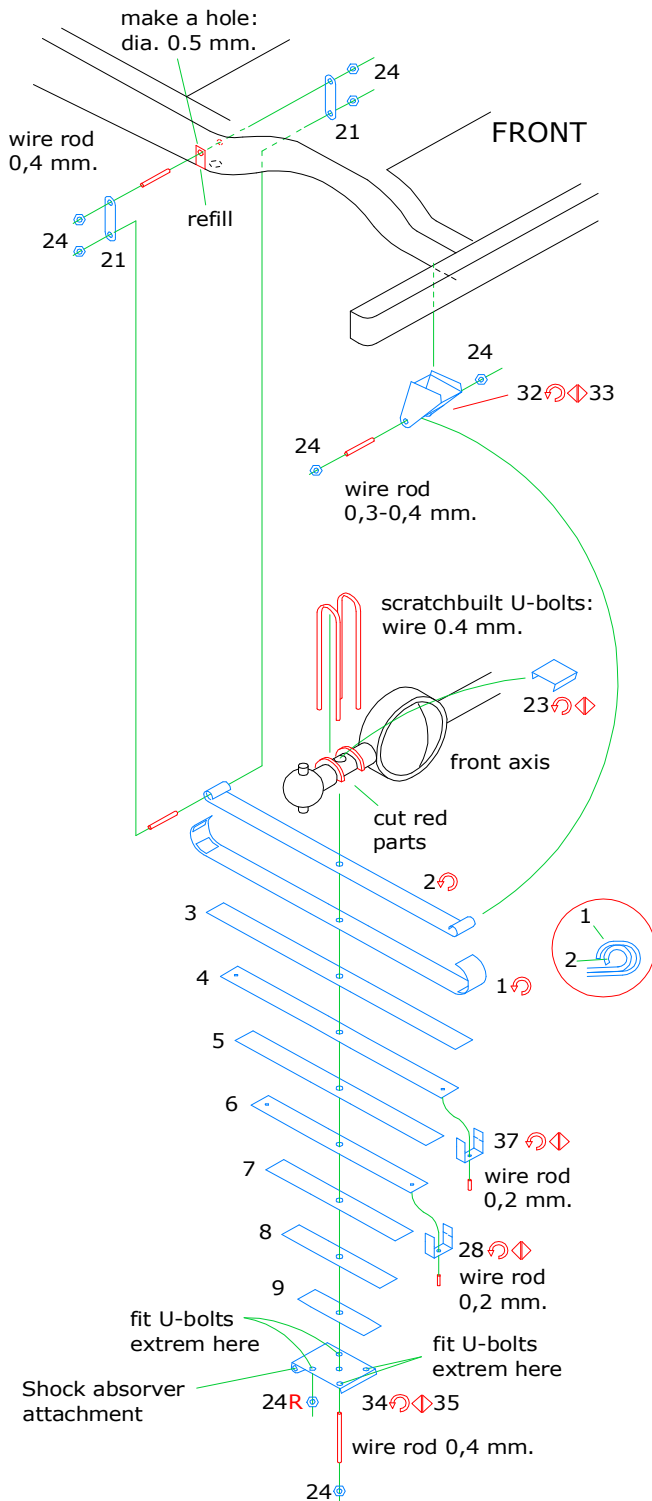
 Bend  Symmetrically (Both sides) **OP** Optional **I** Put into  Original parts  minor kit parts  Scratchbuilt or modified parts **R** Repeat on all similars

Is better to bend the spring before to mount the leaf grips and before to mount on the axis.



Later you can adjust the spring curvature

## FRONT SPRING



## REAR SPRING

